

Chamber Membership



Welcome to
WASHINGTON COUNTY

A dark blue banner with a white star on the left. Inside the star, the words "Since 1917" are written in red. To the right of the star, the text "Washington County Chamber" is written in white, with "Chamber" in a larger font. Below this, "Convention & Visitors Bureau" is written in a smaller white font.

Since
1917

Washington County
Chamber
Convention & Visitors Bureau

Your Path. Your Choice.



Basic Membership

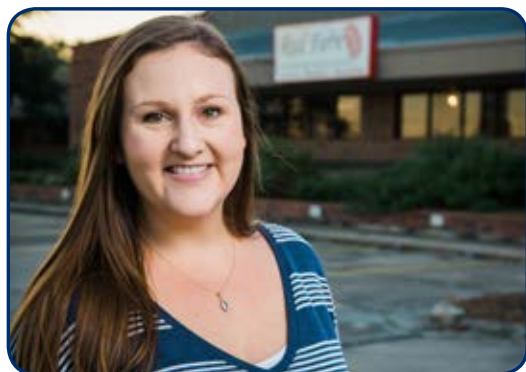
Let the Washington County Chamber help you develop your network and build connections in the community. This level is designed to provide assistance for businesses in this region.

Annual Investment - \$225

Valued at Over \$1,325

Marketing Visibility Benefits

- ◆ Gain exposure on the Internet with a searchable listing in the Chamber's online Business Directory (7,000-10,000 hits monthly) with link to your website, plus map and directions. **(\$600 value)**
- ◆ Receive two listings in the annual Chamber Magazine (alpha & category), distributed to residents and visitors/tourists.
- ◆ Promote your special events on the Chamber's online Calendar on www.BrenhamTexas.com. (7,000—10,000 hits monthly)
- ◆ Able to display business cards in Chamber lobby. (6,000 walk-ins per year)
- ◆ New members enjoy special recognition with a Ribbon Cutting ceremony, featured listing on the Chamber home page, local media exposure, and publicity in the ChamberWorks newsletter and E-news. **(\$500 value)**
- ◆ Your business/organization will be promoted to visitors and residents.
- ◆ Receive an official Chamber member decal and plaque to display at your business. **(\$25 value)**
- ◆ Special recognition in the Chamber newsletter upon your membership renewal. **(\$20 value)**
- ◆ Discount in the Constant Contact Advantage Program for your email marketing. **(Up to 25% off a 12-Month subscription)**
- ◆ Learn how to maximize your membership at "Chamber 101" events, with free admission.



"It was a smart business decision to join the Chamber. I love the opportunities to showcase our business year-round, locally and on the Internet. We joined to gain visibility for our new business. We have met so many wonderful people and developed new friends as well as customers."

Hope Burkhart-SanFilipo, Red Fern Woodwork & Renovation

Advocacy & Resources

- ◆ Benefit from the efforts of the Chamber Board and staff who represent the business community at the local and state government levels. Have a voice in political issues that affect businesses.
- ◆ Help set Chamber priorities by giving input on member-only surveys and by serving on committees.
- ◆ Save time and money with access to low-cost and online training programs for you and your employees on a variety of topics.
- ◆ Advertise open positions at your business on the Job Postings page on www.BrenhamTexas.com. **(\$50 value per listing)**
- ◆ Be eligible to advertise in the Chamber newsletter, magazine, and more. **(rates \$25 - \$40 per issue)**
- ◆ Be eligible to participate as a member of the Blue Blazers organization.
- ◆ Attend workshops and events at the discounted member rate.
- ◆ Access Affinity Partner products including affordable credit card processing and online training.
- ◆ Certificates of Origin for international trade for members only. (fee applies)
- ◆ Notary Public service – provided free for members.
- ◆ Eligible to insert your business info in the Relocation Package for newcomers (fee applies).
- ◆ Eligible to participate in Leadership Washington County (tuition fee applies).

Business Builder

Growing businesses have unique needs. At this level, the Chamber helps you work smarter by increasing exposure to take your business to the next level.

Annual Investment - \$375

Valued at Over \$1,840

Includes All Benefits

in Basic Membership **“plus”** others listed here

Increase Your Visibility

- ◆ Get more exposure with one additional category listing for your business in the online Business Directory and the Chamber Magazine - 1 alpha and 2 category listings. **(\$100 value)**
- ◆ Gain member-only access to Chambermaster features including Hot Deals, Job Postings and News Releases to promote your business and more.
- ◆ Able to promote your special offers and discounts through “Hot Deals” on www.BrenhamTexas.com (7,000-10,000 views monthly) and in social media. **(\$50 value per listing)**
- ◆ Able to display your marketing materials, and brochures in the Chamber lobby - 6000 walk-ins a year. **(\$240 value)**
- ◆ Eligible to host a Networking Breakfast at your location (hosting fee applies) and Business After Hours events (as available).
- ◆ Eligible for exposure in News Releases/Business Spotlights, Eblasts, etc. (free per content policy) that reaches a targeted audience of community leaders and Chamber members. **(\$50 value per Spotlight)**

Access Additional Resources

- ◆ Receive one half-day rental of the Chamber Conference Room for your own event. **(\$40 value)**
- ◆ Receive one set of printed Mailing Labels of all Chamber members (800+ contacts) to promote your products and services. **(\$40 value)**
- ◆ Receive a \$25 credit to apply to any Chamber workshop/event during the year. **(\$25 value)**
- ◆ Receive a tuition discount for the prestigious Leadership Washington County program. **(\$100 value)**

“Being a member of the Washington County Chamber for almost 20 years now, I value how they always work with me to provide leads, professional guidance and support to improve my business and marketing. Chamber promotions are very valuable assets.”

Al Patel, Holiday Inn Express



Business Investor

While you're working, the Chamber works for you by providing more visibility 24/7. This level is a smart decision for busy business owners that want enhanced publicity and strategic networking.

Annual Investment - \$750

Valued at Over \$3,200

Includes All Benefits
in Two Prior Levels **"plus"** others listed here

Targeted Visibility Opportunities

- ◆ Gain even more exposure with one additional category listing for your business in the online Business Directory and the Chamber Magazine - 1 alpha and 3 category listings. **(\$100 value)**
- ◆ Receive one business-card-size B&W ad in the Chamber Magazine at no charge, or the equivalent discount for a larger ad space. **(\$350 value)**
- ◆ Your listings will be printed in bold type and starred in the Chamber Magazine. **(\$50 value)**
- ◆ Your logo will be displayed on the "Chamber Investor" web page for 12 months on www.BrenhamTexas.com to recognize your community investment. **(\$240 value)**
- ◆ Receive an invitation to one exclusive Presidential Roundtable event per year, where you can network in a small group with some of our community's top business leaders and elected officials.
- ◆ Receive a social media "Focus" package once per year, which includes a customized post on Facebook, Twitter and more, with video if desired. **(\$400 value)**
- ◆ Eligible to insert your business info in the Relocation Package for newcomers at no additional charge. **(\$85 value)**
- ◆ Receive an attractive "Business Investor" level plaque to display. **(\$25 value)**

"My annual dues investment with the Washington County Chamber is a truly cost-effective marketing expense. Being found online 24/7 and taking advantage of the social media exposure is of huge importance to my company. The Chamber's promotion of my business online boosts my SEO, visibility and credibility."

Brice Milliorn, Edward Jones

More Valuable Resources

- ◆ Receive two tickets to the Annual Banquet, or equivalent discount on a reserved table. **(\$80 value)**
- ◆ Receive two half-day rentals of the Chamber Conference Room for your own events. **(\$80 total value)**
- ◆ Receive a second set of printed Mailing Labels of all Chamber members (800+ contacts) to promote your business. **(\$80 total value)**
- ◆ Receive a second \$25 credit to apply to any Chamber workshop/event during the year. **(\$50 total value)**



Presidential

Presidential level membership demonstrates a commitment to building a better local economy by supporting the Chamber's work in advocacy, education/workforce development, talent attraction and leadership development. It is an investment in the future of Washington County.

Annual Investment - \$1,700

Valued at Over \$5,200

Includes All Benefits
in Three Prior Levels **"plus"** others listed here

Preferred Status & Enhanced Opportunities

- ◆ Receive premium recognition in the annual Chamber Magazine with your logo and web address prominently displayed, and searchable listings for all of your locations/entities in the online Business Directory, up to 8 alpha and category listings. **(\$400 value)**
- ◆ Presidential level recognition in the Chamber's monthly printed newsletter and the E-news. **(\$540 value)**
- ◆ Invitations to all Presidential Roundtable events with elected officials, local business CEOs and civic leaders.
- ◆ Enjoy one complimentary table at the Chamber Annual Banquet each year - 8 tickets. **(\$400 value)**
- ◆ Your logo will be displayed on the "Presidential Members" web page for 12 months on www.BrenhamTexas.com to recognize your enhanced community involvement. **(\$360 value)**
- ◆ Receive a social media "Focus" package twice per year. **(\$800 value)**
- ◆ Receive an attractive "Presidential Member" plaque to display at your business. **(\$50 value)**

Priority Access

- ◆ **First option** to sponsor Chamber events and to reserve tables and tickets.
- ◆ Guaranteed selection of one participant to the Leadership Washington County program each year. (at discounted tuition rate)
- ◆ Preferred placement seating at all Chamber events with signage recognizing your Presidential membership level. **(\$100 value)**

"We're a proud member of the Chamber, because it's a valuable asset to all businesses in the area. It provides opportunities for business leaders to collaborate on economic, government and educational issues to enhance the economy and quality of life in Washington County."

Pam Green, RE/MAX Advantage



Chairman's Circle

As the top-tier investor, Chairman's Circle members support the Chamber's mission to promote and grow business in this community. Your organization receives elite recognition at all signature events as well as the highest level recognition in publications, marketing opportunities and on the Chamber website.

Annual Investment - \$3,800

Valued at Over \$11,000

**In Addition
to Benefits from Previous Levels**

Exclusive Top-Tier Benefits

- ◆ Chairman's Circle premier recognition in the annual Chamber Magazine, the monthly newsletter and E-News. **(\$600 value)**
- ◆ Your logo will be displayed on the home page of www.BrenhamTexas.com for 12 months to recognize your elite membership status and significant community involvement. **(\$480 value)**
- ◆ Built-in sponsorship of the prestigious Leadership Washington County program. **(\$1,800 value)**
- ◆ Built-in sponsorship of the Chamber Annual Banquet with exhibit space option. **(\$1,800 value)**
- ◆ An additional complimentary table at the Chamber Annual Banquet. **(\$800 total value)**
- ◆ Built-in sponsorship of the Chamber Board of Directors Planning Retreat. **(\$1,000 value)**
- ◆ Receive key recognition at all Chamber events.
- ◆ Receive a social media "Focus" package up to four times per year. **(\$1,600 value)**
- ◆ Receive an attractive Chairman's Circle Plaque to display at your business and virtual plaque for your website and electronic communications. **(\$100 value)**
- ◆ Custom plaque displaying your logo installed in the Chamber Conference Room for public display. **(\$400 value)**
- ◆ Receive invitations to special briefings and VIP receptions hosted by the Chamber. **(\$100 value)**

More!

At this level, your membership will be customized to include underwriting key events.

The Chamber will help you create a custom membership package to meet your objectives.

"The Chamber provides invaluable networking opportunities and business relationships, plus an important outlet to serve the community. The Chamber is the connecting force in our community, and it develops leaders for our future."

Gracie Slattery, Brenham Clinic



Member Levels & Benefits

	\$225/Year <i>\$56.25/Quarter</i>	\$375/Year <i>\$93.75/Quarter</i>	\$750/Year <i>\$187.50/Quarter</i>	\$1700/Year <i>\$425/Quarter</i>	\$3800/Year*
	Basic	Business Builder	Business Investor	Presidential	Chairman's Circle
Searchable Online Presence on Chamber Website	1 alpha + 1 category, web link, map & directions	1 alpha + 2 categories, web link, map & directions	1 alpha + 3 categories, web link, map & directions	8 alpha + categories for multiple locations, web link, map & directions	1 alpha + 3 categories for multiple locations, web link, map & directions
Listing(s) in Chamber Magazine	1 alpha + 1 category	1 alpha + 2 categories	1 alpha + 3 categories	Up to 16	Up to 16
Subscription to monthly ChamberWorks	✓	✓	✓	✓	✓
Member-only pricing for programs and events	✓	✓	✓	✓	✓
Access to Chamber networking events	✓	✓	✓	✓	✓
Eligible to display business cards in lobby	✓	✓	✓	✓	✓
Receive referrals to your business	✓	✓	✓	✓	✓
Ribbon Cutting Ceremony	✓	✓	✓	✓	✓
Membership decal & plaque	✓	✓	✓	✓	✓
Able to place events on Chamber Calendar and Job Postings	✓	✓	✓	✓	✓
Access to Affinity Partner Programs	✓	✓	✓	✓	✓
Eligible to Participate in the Blue Blazers, committees & task forces	✓	✓	✓	✓	✓
Government Advocacy at local and state levels	✓	✓	✓	✓	✓
Eligible for News Releases/Business Spotlights, Eblasts, etc. (fees apply)	✓	✓	✓	✓	✓
Notary Public Service (free for members)	✓	✓	✓	✓	✓
Certificates of Origin Available for International Trade (fees apply)	✓	✓	✓	✓	✓
Eligible to insert materials in Relocation Package (fee applies)	\$100	\$85	No Charge	No Charge	No Charge
Eligible for Leadership Washington County (tuition fee applies)	\$750	\$650	\$650	\$650	\$650
Eligible to display business cards AND brochures in lobby		✓	✓	✓	✓
Able to place Hot Deals online		✓	✓	✓	✓
Receive 1 set of printed Chamber membership on labels		✓	✓	✓	✓
Your events included on Chamber Calendars - printed and online		✓	✓	✓	✓
Exposure in Business Spotlights, Eblasts, etc. (free, per policies)		✓	✓	✓	✓
Receive Gift Certificate for Chamber event admission fees		\$25	\$50	\$50	\$50
Able to host Networking Breakfast (hosting fee applies)		✓	✓	✓	✓
Receive 1 business-card B&W ad in Chamber Magazine or equivalent discount			✓	✓	✓
Your logo on "Chamber Investor" web page			✓	✓	✓
Receive a Business Investor Plaque to display			✓	✓	✓
Your listings in bold and starred in Chamber Magazine			✓	✓	✓
Receive Invitation to 1 Presidential Roundtable event per year			1	All	All
Social media "Focus" package 1 time per year			✓	✓	✓
Receive 2 tickets to Annual Banquet			✓	✓	✓
Receive two half-day rentals of Chamber Conference Room			✓	✓	✓
Receive two sets of printed Chamber membership on labels			✓	✓	✓
Presidential level recognition in annual Chamber Magazine, monthly newsletter and E-news				✓	✓
First option to sponsor Chamber events, reserved tables and tickets				✓	✓
Your logo on "Presidential Members" web page				✓	✓
Social media "Focus" package 2 times per year				✓	✓
One complimentary table at Chamber Annual Banquet				✓	✓
Receive a Presidential Member plaque to display				✓	✓
Preferred seating at all Chamber Events with signage				✓	✓
Invitations to Presidential Roundtable events				✓	✓
Guaranteed selection of 1 participant to Leadership Washington County (tuition fee applies)				✓	✓
Premier recognition with your logo in every issue of ChamberWorks newsletter, Chamber Enews, Magazine and on Web					✓
Sponsorship of Leadership Washington County, Chamber Board Annual Planning Retreat, and the Annual Banquet					✓
Two complimentary tables at Chamber Annual Banquet					✓
Chairman's Circle Plaque and virtual plaque on Chamber publications & communications					✓
Social media "Focus" package up to 4 times per year (\$1,200)					✓
Custom plaque with your logo installed in the Chamber Conference Room					✓
*Customized membership package to include opportunities that meet your organization's objectives.					✓

More Membership Options



"There is a special discount for non-profit organizations, because the Chamber recognizes their importance to the community and provides us with valuable promotions."

Dalia Vela
Faith Mission & Help Center



"The Chamber is a strong advocate for local businesses like mine, and provides leadership to keep our local economy growing."

Dr. Lee Panko
Brenham Veterinary Hospital



"Being a member of the Washington County Chamber has meant credibility, strength and support for my business. It gets my name out to a wide audience."

Heather Huff
Absolutely Fabulous Salon

Additional Category and Second Business

- ◆ Same Business, Second Category (website & print) \$100
- ◆ Second Business, Different Category: Half cost of same (primary) or lower level choice.

"Chamber Friend"

For individuals who wish to stay informed and be in the Chamber database to receive emails about community events, etc. (no other benefits, no listings online or in magazine) \$100

"Tourism Partner"

Tourism-related businesses and organizations receive customized benefits! Your business can be featured on both the Chamber website and the VisitBrenhamTexas.com website. Gain tremendous exposure to visitors and groups. Inquire for more details!

Non-Profit Organizations

A discount of 10% is offered to non-profits annually on any Membership Level choice (must be registered with State and provide tax ID number). Discount is not for Additional Opportunities/Sponsorships.

Additional Opportunities and Services are Available at All Levels

- ◆ ChamberWorks monthly newsletter ad space - \$40/\$35/\$25
- ◆ Annual Magazine color display ad space*
- ◆ Website banner ads*
- ◆ Membership List on mailing labels for your use - \$40 per set
- ◆ Relocation Package – option to insert your brochures - \$85 per year
- ◆ Business After Hours event hosting - \$750/\$500
- ◆ Networking Breakfast event hosting - \$200/\$150
- ◆ Chamber Conference Room rental - half or full day - \$40/\$80
- ◆ P.A. System rental - \$25 per day
- ◆ Santa Suit rental - \$25 per day
- ◆ Social media "Focus" package - \$400
- ◆ News Releases/Business Spotlight, Hot Deal or Eblast - \$50 per insertion (per policy)
- ◆ Special event sponsorships: Tailgate, Small Business Forum, Administrative Professionals Day, etc. These have a range of fees; details are mailed to members prior to each event.

**These opportunities have a range of fees. Full details available upon request.*