



Tel: 651-486-2010

info@marinetechproducts.com

55-0350

Auxiliary Motor Lift Model 35LE

The auxiliary motor lift 35LE is the same rugged design as the powerful Model 35 with the exception of the convertible setback. The transom plate on this model is designed to fit the contoured transom of Ranger and other similar boats, making the perfect choice for walleye and muskie anglers.

This heavy-duty bracket easily handles auxiliary outboards up to 35hp or 150 pounds. Kicker motors are supported in any position with this durable design, featuring a 12 volt actuator that you control with a remote on a 12 foot cable. The Model 35 is the only kicker motor lift with a convertible setback. This unit will tilt your motor approximately 60 degrees.

Made of 713 cast aluminum. protected with rich zinc epoxy primer and black powder coat paint.

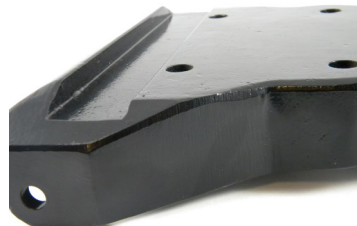
To provide adequate support for your Panther bracket, the transom side of the bracket must be fully covered by the boat's transom.

Weight 28 lbs.



Transom plate hole spacing:
Across: 6.0" between holes
Down: 3.5" between holes.

These pictures show the unique shape of the transom plate.



REV 1/16