



**55-0030
SWIM PLATFORM BRACKET**

**FOR LIGHT WEIGHT AUXILIARY
ENGINES UP TO 20 HP**



INSTRUCTION MANUAL

REV. 01/17

Auxiliary Outboard Motor Bracket

Mounting Instructions for Proper Location of Outboard Motor

AUXILIARY OUTBOARD MOTOR BRACKET CAUTION GUIDELINES

1. **Always** remove your motor from bracket when trailering. Failure to do so may result in damage to boat, motor, or bracket.
2. Do not exceed the stated H.P. rating or weight.
3. Verify that the motor clamps are tight before every use.
4. **You must always use a safety cable when operating your motor.**
5. Operate motor at low speed. Avoid turning motor at full throttle. Refrain from sharp turns.
6. Operate your motor in lowest position possible for best performance.
7. Raise and tilt motor **ONLY** when motor is **NOT** in use or running.
8. Do not alter the motor mounting plate or bracket in any way.

The completed installation should result in the cavitation plate of the outboard motor being at least two inches (2") below the surface of the water, but not more than 2" below the bottom of the boat directly in line with the kicker. You may have to experiment with the different motor mount height settings to determine which set of mounting holes to use.

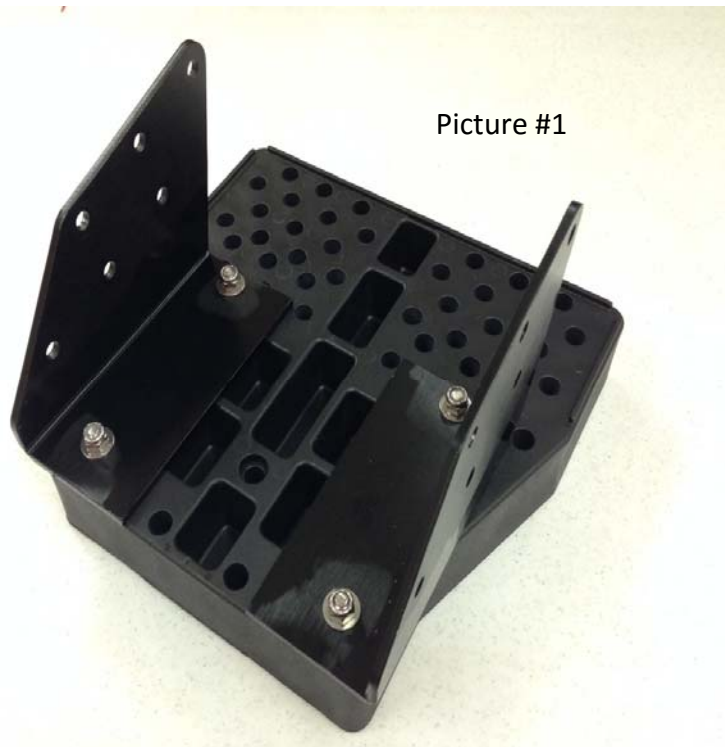
You should first determine the shaft length of your motor, this is the distance from inside the top of the motor clamp area to the cavitation plate [most kicker motors are 20"].

After you have mounted the base, but before the motor mount plate is attached, take a yard stick [you could use any stick with 20" measured on to it] and tape it to the motor mount plate so that the 20" mark is at the top of the motor mount plate. If your kicker motor has a different shaft length, adjust the numbers accordingly. The "zero" end now approximates where the cavitation plate will be. Now you can select the proper mounting location for the motor mount plate.

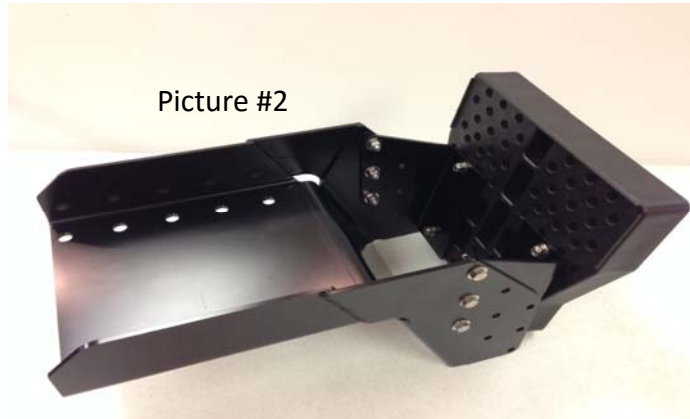
The kicker motor should be raised/trimmed up out of the water when operating the main motor.

Installing the Swim Platform Bracket 55-0030

1. Set the bracket in the desired mounting location.
 - A. Check the area underneath for clearance for mounting bolts, fender washers and nuts. A minimum of four 1/2" Stainless Steel bolts must be used to mount the Panther bracket to the swim platform, utilizing pre-drilled holes in the mounting plate.
 - B. The mounting bolts should be positioned as far apart as possible with fender washers on the under side to assure adequate support.
 - C. On swim platforms which are not molded directly onto the boat hull you must use the support tube assembly. On these applications, make sure you have clearance and a mounting location for the support tube bracket to be attached to the transom before drilling and mounting the Panther bracket.
2. Bolt the side brackets to the motor board.
 - A. Use the widest bolt holes to mount the side brackets. (See picture #1).
 - B. Make sure the angled portion of the side brackets is toward the smaller diameter of the motor board.
 - C. At the bottom of the motor board, use the two 5/16" x 2-1/2" Carriage Bolts with two 5/16" flat washers and two 5/16-18 Nylon Insert Nuts.
 - D. At the top of the motor board, use the two 5/16" x 2-1/2" Fanged Elevator Bolts with two 5/16" flat washers and two 5/16-18 Nylon Insert Nuts.



3. Select mounting location to secure the side brackets/motor board to the main bracket.
 - A. There are three height settings for the motor board. Select the best setting to assure the outboard will not cavitate when in operation.. (See Mounting Instructions for Proper Location of Outboard Motor).
 - B. Secure the mounting brackets to the main bracket using the six 5/16-18 x 1" Cap Screws, 12 5/16" washers and six 5/16" Nylon Insert Nuts. (see picture #2).



4. If the support tube is needed, follow these additional instructions.
 - A. Mount the support tube bracket to the main bracket using the two 1/4-20 x 3/4" Cap Screws, and two 1/4-20 Nylon Insert Nuts and two 1/4" flat washers. (See picture #3).
 - B. Mount the 1" diameter (the larger one) support tube to the support tube mounting bracket using the 5/16-18 x 1-1/2" Cap Screw and one 5/16"-18 Nylon Insert Nut. (See picture #4)
 - C. Slide the smaller support (7/8") tube inside the large support tube and position the smaller tube to the desired location on the transom underneath the swim platform .
 - D. Attach the second support tube bracket to the transom where the support tube meets in step C using the appropriate hardware (not supplied). (See picture #5)
 - E. Attach the smaller support tube to the transom mounted support tube bracket with the 5/16-18 x 1-3/4" cap screw and one of the 5/16-18 Nylon Insert Nuts. Use additional 5/16" Flat washers to take up any excessive play.
 - F. Attach the second support tube to the transom support bracket using the 5/16-18 x 1-3/4" cap screw and one 5/16-18 Nylon Insert Nut. Use additional 5/16" flat washers to take up any excessive play.
 - G.. Make sure the tube adjustment is the proper length needed to adequately support the bracket.

- H. Divide the support tube length needed in half and drill a hole through both support tubes, using a 5/16" drill bit.
- I. Use the 5/16-18 x 1-1/2 Cap Screw and a 5/16-18 nylon insert nut through the hole drilled in step F to keep the adjustment of the support tubes in one position. (See picture #6)



Picture #3

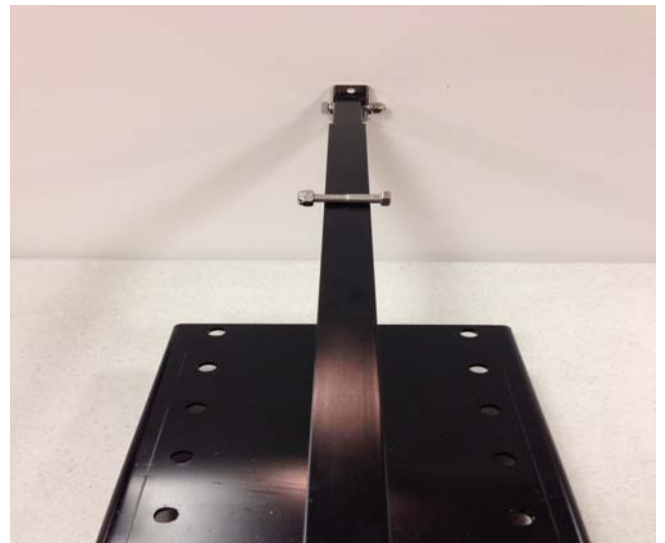


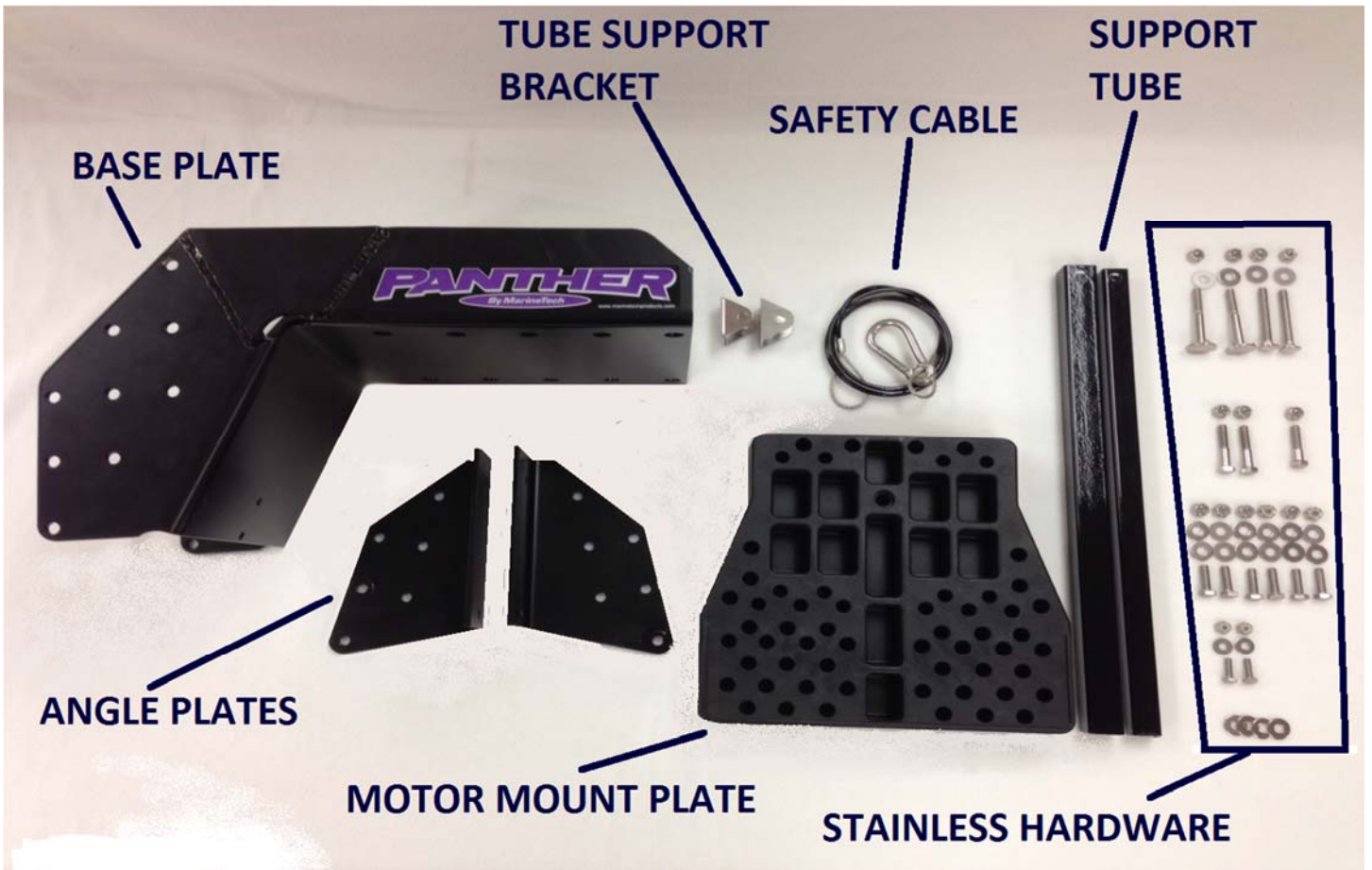
Picture #4

Picture #5



Picture #6





Stainless Hardware Description	Application	Qty.
1/4-20 X 3/4" Cap Screw	Tube Support Bracket to Base Plate	2
1/4-20 Nylon Insert Nut	Tube Support Bracket to Base Plate	2
1/4" Flat Washer	Tube Support Bracket to Base Plate	2
5/16-18 x 1-3/4" Cap Screw	Support Tube to Support Tube Bracket	2
5/16-18 x 1-1/2" Cap Screw	Outer Support Tube to Inner Support Tube	1
5/16-18 x 1" Cap Screw	Angle Plates to Base	6
5/16-18 Nylon Insert Nut	All 5/16" Cap Screws	13
5/16" Flat Washer	Angle Plates to Base Plate	20
5/16" x 2-1/2" Carriage Bolt	Plastic Motor Board to Angle Plates (Lower)	2
5/16" x 2-1/2" Fanged Elevator Bolt	Plastic Motor Board to Angle Plates (Upper)	2

SERVICE AND WARRANTY

Should your unit ever require service, *please do not return the product to your dealer*. Please call the number below for special instructions on shipping and handling. Please call between 9:00 am - 3:00 pm (Central Standard Time) Monday through Friday. If service is required and covered by warranty, it will be repaired or replaced as described below. If service is required and not covered by warranty, (such as damage caused from improper trailering or from water intrusion through the breather tube), replacement parts are available for purchase and may be paid for by credit card

The warranty coverage on this equipment is limited to the terms set forth below:

MarineTech Products, Inc. warrants this product to be free of defects in material and workmanship for a period of ONE (1) YEAR from the date of original retail purchase. Positive proof of date of purchase is required for warranty service. If service is required and covered by warranty, the unit will be repaired or replaced with new or factory rebuilt parts at no charge. The defective components must be returned to the address specified, with shipping charges prepaid. Be sure to include your name, address, telephone number and a copy of the sales receipt showing the date of original retail purchase. All sales receipts are subject to verification.

This warranty does not apply if the unit has been damaged by accident, abuse, misuse, poor installation or misapplication, or if it has been modified from its original condition, or if any serial number has been removed or defaced or altered. This warranty does not cover any expense to remove or reinstall the unit or any of its components. If a returned unit is not covered by warranty, the sender will be notified and given an estimate of the charges to repair or replace the unit, together with the return shipping charges.

THIS WARRANTY DOES NOT COVER SPECIAL, INCIDENTAL, OR CONSEQUENTIAL DAMAGES RESULTING FROM ANY BREACH OF WARRANTY, OR UNDER ANY OTHER LEGAL THEORY, INCLUDING BUT NOT LIMITED TO DAMAGE TO OR REPLACEMENT OF OTHER EQUIPMENT AND PROPERTY. THE WARRANTY AND REMEDIES SET FORTH ARE EXCLUSIVE AND IN LIEU OF ALL OTHERS, WHETHER ORAL OR WRITTEN, EXPRESS OR IMPLIED. DUE TO THE SPECIAL AND UNIQUE CONDITIONS THAT MAY EXIST IN EACH APPLICATION, THE MANUFACTURER SPECIFICALLY DISCLAIMS ANY AND ALL IMPLIED WARRANTIES OF MERCHANTABILITY AND FITNESS FOR A PARTICULAR PURPOSE. NO DEALER, AGENT OR EMPLOYEE IS AUTHORIZED TO MAKE ANY MODIFICATION, EXTENSION OR ADDITION TO THIS WARRANTY.

Some states do not allow exclusion of incidental or consequential damages, so the above exclusions may not apply to you. This warranty gives you specific legal rights, and you may also have other legal rights, which may vary from state to state

FOR SERVICE

send an email to - info@marinetechproducts.com

or call 651.486.2010

MARINETECH PRODUCTS, INC

1360 East County Road E

VADNAIS HEIGHTS, MN 55110

MarineTech Products, Inc. is proud to offer these fine lines:



**SOLUTIONS FOR MOTOR MOUNTING, REMOTE STEERING, TILT & TRIM,
SHALLOW WATER ANCHORS, AND SECURITY SYSTEMS**



**ROD HOLDERS, TROLLING MOTOR SUPPORTS, AND
GPS/SONAR MOUNTS**



AUXILIARY OUTBOARD MOTOR STEER SYSTEMS



THROTTLE CONTROL FOR GAS POWERED AUXILIARY MOTORS

www.marinetechproducts.com