

Our Customers

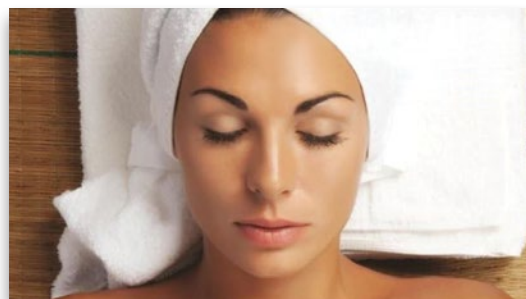
Columbus Junction Laundromat Columbus Junction, Iowa

Columbus Junction is a picturesque city located in the wooded hills overlooking the confluence of the Cedar and Iowa Rivers in S.E. Iowa. Normally a town of 1,900 would not need two laundries (there has been another laundry in town for many years), but Jorge Muniz saw a need for a clean, modern laundry in his home town. With the help of Minnesota Chemical, Jorge opened a beautiful laundry that his town deserved. Jorge's local banker turned down his loan request but Huebsch Financial saw the potential and funded the project. The Columbus Junction Laundromat features a full time attendant, air conditioning, free WIFI, wide aisles and a bottle redemption center. Jorge's customers appreciate the large Huebsch washers and tumblers that make wash day a pleasure. Jorge appreciates the machine's efficiency and value added offered by the Galaxy 600 controller.



OxyGuard™ 40

Luxury Starts in the Laundry



Effective at 104°F, OxyGuard™40 is sustainably engineered with exclusive molecular technologies to consistently deliver exceptional whiteness to your customers, and operational efficiencies to you.

- Low temp non-chlorinated oxidizing wash program
- Innovative patent pending technology
- Exceptional whiteness and unparalleled softness
- Extended linen quality and lifetime

2285 Hampden Ave.
St. Paul, MN 55114
651-646-7521
Toll Free: 1-800-328-5689
Fax: 651-649-1101

Service & Parts Fax:
651-646-7206

13636 Carmen Avenue, Suite 4
Menomonee Falls, WI 53051
262-781-8630

Waverly, IA
319-352-4338

Equipment Department Manager: Mike Baker
Equipment Coordinator: Patrick Reed
Equipment Sales: Daniel Baker, James Baker, Tony Crain, Jon Karll
Equipment Customer Service Manager: Ed Jensen
Service Engineers: Dan Elstad, Ed Jensen, Andy Putnam, Lacey Mejia, Chad Reisinger

Supply Department Manager: Stephen Baker
Supply Sales: Jon Karll, John Sandretto, John Sullivan
Parts Manager: Barbara Swanson

Warehouse: Bruce Edwards, Duane Fox
Purchasing/Accounts Payable: Chris Schiefelbein
Accounts Receivable/Credit: Lori Kahle
Front Office: Anita Skinner
Controller: Kwen Johnson
City Desk: Erika Clinton

Nursing Homes

HiQ EOS Computer-less Labeling System

This new all in one computer-less label printer is easy to use, economical and very portable. Just attach a keyboard, turn on the EOS printer, choose a standard format/label size, enter the resident's name and number of labels to print. Labels are then applied to the garment using Thermopatch manual or automatic heat seal machine.

Labels and Ink are sold together. Standard Size is 3/4" x 2 1/4",

TC3422-01P, 4800 labels with ink ribbon roll \$245

Other size labels also available



Thermopatch

Since 1934

You Tube See this system in operation at: https://youtu.be/C_iIBkRA1P4



**HiQ EOS
Label Printer \$945**
(shown without keyboard)



**HS3e Manual Release
Heat Seal Machine \$1333**

**HS4e Automatic Release
Heat Seal Machine \$1642**

Water Conservation for On-Premise Laundries

Milnor's 60 lb. capacity washer-extractors feature

RinSave® water conservation technology standard



Current economic conditions have forced healthcare facilities to focus on operating costs, particularly back-of-the-house operations – including the on-premise laundry, according to healthcare operators.

This innovative process called RinSave® eliminates up to two high level rinses (.33 gallons per pound processed) and up to 10 minutes in the wash formula. It saves labor, water, sewer and electricity which are the largest direct operating expenses in the laundry. RinSave® conserves water, further substantiates your facility's green program and is infinitely sustainable, without further investment.



Equipment

New Milnor Washer/Extractors 2017 Prices

– MWR18E4, 45#, EP One Touch Micro, 4 Formulas, 3 Speed, 208/240/60/1/3	\$7,845
– MWR18X4, 45#, EP Express Prog Micro, 3 Speed, 208/240/60/1/3	\$8,475
– MWR18J6, 45#, EP Plus Prog Micro, Temp Control, 6 Speed, 208/240/60/1/3	\$9,275
– 30015T6X, 40#, EP Express Prog Micro, Rinsave, 4 Speed, 208/240/60/3	\$12,625
– 30015VRJ, 40# EP Plus Micro, Programmable, Temp Control, Rinsave, 7 Speed, 208/240/60/3	\$14,325
– 30015V8Z, 40# Miltouch Prog Micro, Temp Control, Rinsave, 7 Speed, 208/240/60/3	\$15,825
– MWR27E5, 60#, EP One Touch Micro, 4 Formulas, 3 Speed, 208/240/60/1/3	\$10,495
– MWR27X5, 60#, EP Express Prog Micro, 3 Speed, 208/240/60/1/3	\$11,125
– MWR27J5, 60# EP Plus Prog Micro, Temp Control, 6 Speed, 208/240/60/1/3	\$11,855
– 30022T6X, 60#, EP Express Prog Micro, Rinsave, 4 Speed, 208/240/60/3	\$13,525
– 30022VRJ, 60#, EP Plus Prog Micro, Temp Control, Rinsave, 7 Speed, 208/240/60/3	\$14,795

– 30022V8Z, 60#, Miltouch Prog Micro, Temp Control, Rinsave, 7 Speed, 208/240/60/3	\$16,295
– 36021V5Z, 80#, Miltouch Prog Micro, Temp Control, Rinsave, 7 Speed, 208/240/60/3	\$21,995
– 36021V7Z, 80#, Miltouch Prog Micro, Temp Control, Rinsave, 7 Speed, 208/240/60/3	\$25,595
– 36026V5Z, 100#, Miltouch Prog Micro, Temp Control, Rinsave, 7 Speed, 208/240/60/3	\$24,595
– 36026V7Z, 100#, Miltouch Prog Micro, Temp Control, Rinsave, 7 Speed, 208/240/60/3	\$28,595

Rinsave saves water and formula time by special speeds and saving 1 or 2 rinses.
Miltouch is touchscreen programmer with laptop programmability – transfer formulas by USB stick.

New Dryers

– HUEBSCH HT050NQT, 50# Gas, Dual Digital Timers, 120/61/1	List \$4,633
– HUEBSCH HT055NQT, 50# Gas, Dual Digital Timers, Slimline, Fits Through 36" DOOR, 120/60/1	List \$4,802
– HUEBSCH HT075NQT, 75# Gas, Dual Digital Timers, 120/61/1	List \$5,125
– HUEBSCH HT075NRQ, 75# Gas, Dual Digital Timers, Reversing, 208/60/3	List \$6,022
– HUEBSCH HT075NRE/OPT 75# Gas, Micro With Opt Moisture Sensing Drying, Reversing, 208/60/3	List \$6,707

In Stock Special Non Coin

- Speed Queen Gas Homestyle Dryer **Special \$500 in Iowa**

SPECIALS CALL FOR PRICE

Two Huebsch 170# gas dryers, HT170LRQ converted to natural gas, digital dual timers, reversing, 480/60/3, year 2008
Two Milnor 100# washers 36026V6J, EP Plus programmable controller, 208/60/3, year 2002



Close Out Pricing on Thread, Buttons And Zippers!

We have decided to discontinue these items from our inventory, so we are offering very special close out pricing to you! We welcome you to either visit our St. Paul warehouse to view and inspect our large inventory of thread, buttons and zippers, or give us a call and we can confirm availability.

THREAD:

750 yard SPOOLS of Coats Dual Duty thread. Many colors to choose from. – **\$3 per spool**



BUTTONS:

Shirt, fly, skirt, uniform buttons. Mostly 1 gross per box. Many colors and line sizes: – **\$2 per box**



ZIPPERS:

Many colors, styles and sizes. All metal zippers.

7", 9", and 11" Pants and Jean zippers, all colors – **\$0.50 each**

14" to 48" Jacket zippers, all colors, regular and reversing – **\$1 each**

18" to 48" Parka zippers, all colors, regular and reversing – **\$1 each**

27" to 110" Sleeping Bag and Snowmobile zippers, all colors – **\$1 each**

18" to 30" Coverall zippers, all colors – **\$1 each**

Something New – Coin-Op

The All NEW VendMaster Series!

- Electronic soap venders sized to meet your every business need!
- Cabinets: all-steel, welded construction, 3 point locking system
- Built in bag vender available on all models
- Large product display Locked cash boxes
- Vender graphics compliment your store's decor
- All these features combine to offer you years of service



VendMaster 120n

The new VendMaster 120 offers innovations never before available in a soap vending machine. This four column vender is expandable. If you need more columns you can network up to two additional venders to the master unit.

\$1750 FOB Chicago

Cabinet dimensions:

15 3/8" W x 45 1/8" H x 11 1/2" D
Weight: 105 lbs.



Dry Cleaners

BAGGERS – Reduced Labor Equals Increased Profits



PS-290U Automatic

- Flagship Model
- Load from Either Side
- New User Friendly Control Panel
- 240 Bundles/Hour
- Worry Free Operation
- Auto Feed/ Discharge



PS-290HU Industrial Automatic (Heavy Duty)

- Perfect for Uniforms, Dresses & Long Coats – Up to 58½"
- Bulk Packaging
- Upgraded Transfer Carriage Can Handle up to 17 lbs.
- 240 Bundles/Hour
- Worry Free Operation



PM-470U Semi-Automatic

- High Speed Bagging
- Oversized Garments
- 2 Button Operation
- Anti Static Function
- Bulk Packaging



Calendar of Events:

October 3 – 9 AM - MCC Coin & OPL FREE Fall Show - MCC Warehouse, Menomonee Falls, WI
www.minnesotachemical.com

October 5 – 9 AM - MCC Coin & OPL FREE Fall Show - MSP North Event Center, Shoreview, MN
www.minnesotachemical.com

October 10–11 – UMV ALM Fall Seminar - Treasure Island Resort and Casino, Red Wing, MN www.umvailm.org