

2017 Midwest Youth Championship



Oil Pattern Distance: 42 Feet	Reverse Brush Drop: 35 Feet	Oil Per Board: 50 uL
Forward Oil Total: 15.05 mL	Reverse Oil Total: 11.75 mL	Volume Oil Total: 26.8 mL
Forward Boards Crossed: 301 Boards	Reverse Boards Crossed: 235 Boards	Total Boards Crossed: 536 Boards

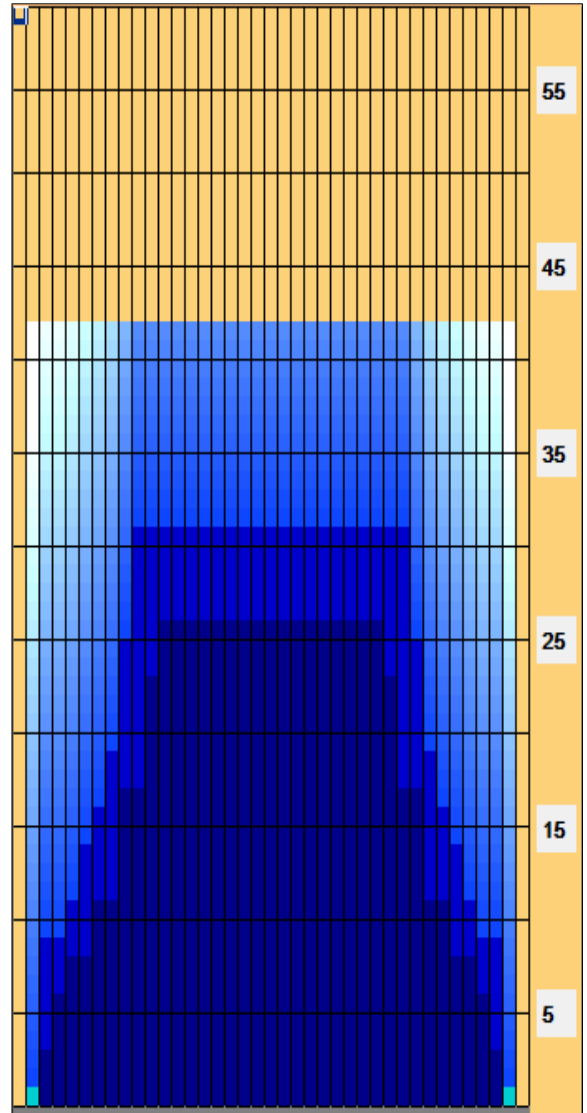
	Start	Stop	Loads	Speed	Crossed	Start	End	Feet	T.Oil
1	2L	2R	2	14	74	0.0	1.9	1.9	3700
2	3L	3R	1	14	35	1.9	3.8	1.9	1750
3	4L	4R	1	18	33	3.8	6.3	2.5	1650
4	5L	5R	1	18	31	6.3	8.8	2.5	1550
5	7L	7R	1	18	27	8.8	11.3	2.5	1350
6	9L	9R	2	22	46	11.3	17.5	6.2	2300
7	11L	11R	2	22	38	17.5	23.7	6.2	1900
8	12L	12R	1	22	17	23.7	26.8	3.1	850
9	2L	2R	0	22	0	26.8	33.0	6.2	0
10	2L	2R	0	26	0	33.0	42.0	9.0	0

	Start	Stop	Loads	Speed	Crossed	Start	End	Feet	T.Oil
1	2L	2R	0	30	0	42.0	31.0	-11.0	0
2	10L	10R	2	22	42	31.0	24.8	-6.2	2100
3	9L	9R	2	22	46	24.8	18.6	-6.2	2300
4	8L	8R	1	18	25	18.6	16.1	-2.5	1250
5	7L	7R	1	18	27	16.1	13.6	-2.5	1350
6	6L	6R	1	18	29	13.6	11.1	-2.5	1450
7	5L	5R	1	18	31	11.1	8.6	-2.5	1550
8	3L	3R	1	14	35	8.6	6.7	-1.9	1750
9	2L	2R	0	14	0	6.7	0.0	-6.7	0

Conditioner:
Type In or Select One

TransferType:
Type In or Select One

- Forward
- Reverse
- Combined
- Buff



Item	3L-7L:18L-18R	8L-12L:18L-18R	13L-17L:18L-18R	18L-18R:17R-13R	18L-18R:12R-8R	18L-18R:7R-3R
Description	Outside Track:Middle	Middle Track:Middle	Inside Track:Middle	Middle: Inside Track	Middle:Middle Track	Middle:Outside Track
Track Zone Ratio	2.94	1.22	1	1	1.22	2.94

