

2016 Midwest Youth Championship



Oil Pattern Distance: 41 Feet **Reverse Brush Drop:** 33 Feet **Oil Per Board:** 50 uL
Forward Oil Total: 15.2 mL **Reverse Oil Total:** 10.5 mL **Volume Oil Total:** 25.7 mL
Forward Boards Crossed: 304 Boards **Reverse Boards Crossed:** 210 Boards **Total Boards Crossed:** 514 Boards

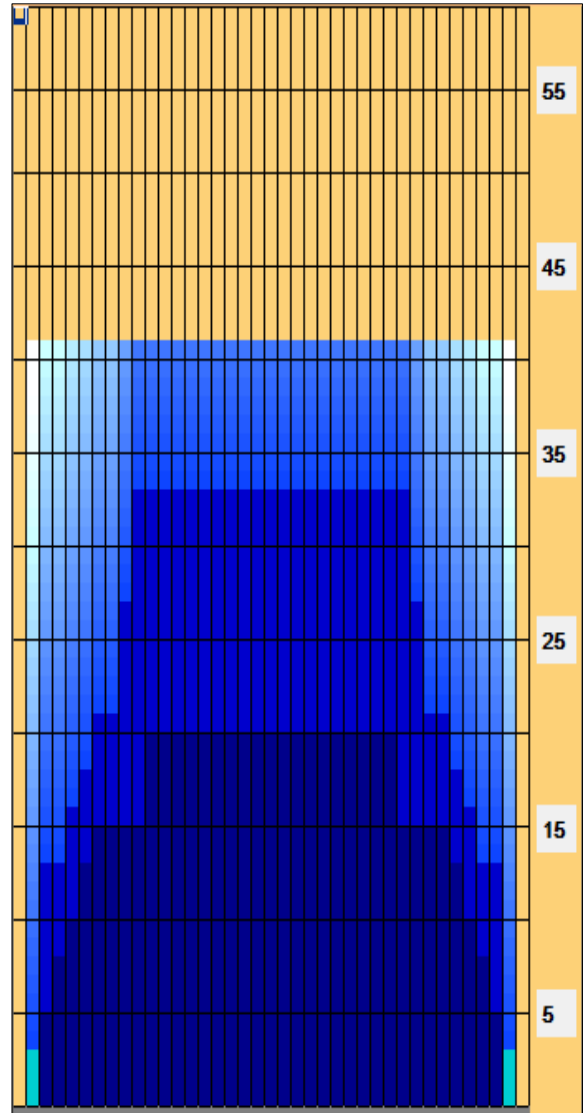
	Start	Stop	Loads	Speed	Crossed	Start	End	Feet	T.Oil
1	2L	2R	3	14	111	0.0	3.9	3.9	5550
2	3L	3R	1	14	35	3.9	5.8	1.9	1750
3	4L	4R	1	18	33	5.8	8.3	2.5	1650
4	5L	5R	1	18	31	8.3	10.8	2.5	1550
5	6L	6R	1	18	29	10.8	13.3	2.5	1450
6	7L	7R	1	18	27	13.3	15.8	2.5	1350
7	11L	11R	2	18	38	15.8	20.9	5.1	1900
8	2L	2R	0	22	0	20.9	33.0	12.1	0
9	2L	2R	0	26	0	33.0	41.0	8.0	0

	Start	Stop	Loads	Speed	Crossed	Start	End	Feet	T.Oil
1	2L	2R	0	30	0	41.0	33.0	-8.0	0
2	10L	10R	2	22	42	33.0	26.8	-6.2	2100
3	9L	9R	2	22	46	26.8	20.6	-6.2	2300
4	7L	7R	1	18	27	20.6	18.1	-2.5	1350
5	6L	6R	1	18	29	18.1	15.6	-2.5	1450
6	5L	5R	1	18	31	15.6	13.1	-2.5	1550
7	3L	3R	1	14	35	13.1	11.2	-1.9	1750
8	2L	2R	0	14	0	11.2	0.0	-11.2	0

Conditioner:
 Type In or Select
 One

 TransferType:
 Type In or Select
 One

- Forward
- Reverse
- Combined
- Buff



Item	3L-7L:18L-18R	8L-12L:18L-18R	13L-17L:18L-18R	18L-18R:17R-13R	18L-18R:12R-8R	18L-18R:7R-3R
Description	Outside Track:Middle	Middle Track:Middle	Inside Track:Middle	Middle: Inside Track	Middle:Middle Track	Middle:Outside Track
Track Zone Ratio	2.2	1.15	1	1	1.15	2.2

