



PlateMaker⁶

POLYESTER PLATESETTER

XANTÉ

©2010 XANTÉ CORPORATION

Xanté® is a registered trademark of Xanté Corporation.

Adobe®, Adobe® PageMaker®, Adobe® PostScript®, the PostScript®, and Adobe® logos are registered trademarks of Adobe Systems Incorporated. Adobe® Acrobat™ is a trademark of Adobe Systems Incorporated which may be registered in certain jurisdictions.

Macintosh® and Mac® are registered trademarks of Apple Computer, Inc.

Microsoft®, Windows®, and Windows NT® are registered trademarks of Microsoft Corporation.

QuarkXPress® and Quark® are registered trademarks of Quark, Inc.

Ethernet® is a registered trademark of Xerox Corporation.

Preps® is a registered trademark and ScenicSoft™ is a trademark of ScenicSoft, Inc.

All other brand and product names are trademarks, registered trademarks, or service marks of their respective holders.

Copyright

This manual is Copyrighted © 2010 by Xanté Corporation. All Rights Reserved. Printed in the USA. This manual may not be copied in whole or in part, nor transferred to any other media or language without the express written permission of Xanté Corporation.

Manual Notice

Xanté Corporation reserves the right to make changes to this manual and to the equipment described herein without notice. Every effort has been made to ensure that this manual is free of inaccuracies and omissions. However, Xanté Corporation makes no warranty of any kind including, but not limited to, any implied warranties of merchantability and fitness for a particular purpose with regard to this manual.

Xanté Corporation assumes no responsibility for, or liability for, errors

contained in this manual or for incidental, special, or consequential damages arising out of the furnishing of this manual, or the use of this manual in operating the equipment, or in connection with the performance of the equipment when so operated.

Xanté Corporation
2800 Dauphin Street
Mobile, AL 36606-2400
Phone: 800-926-8393, 251-473-4920
Fax: 251-473-6503
xante.com

Xanté Europe
Marketing 1
6921 RE Duiven
The Netherlands
Tel.: +31 26 3193 210
Fax: +31 26 3193 211
Internet: xante.com

SAFETY INFORMATION

- Always use the platemaker in a well ventilated area. Allow enough room around the platemaker for adequate ventilation and easy access to the paper trays. If you place the platemaker in an enclosure, ensure it is properly ventilated.
- Do not use the platemaker near water. Do not spill any type of liquid into it.
- Be certain that your power source matches the rating listed on the back of the platemaker. If you are unsure, contact your dealer or local power company.
- Do not insert anything into the ventilation slots on the platemaker. You could cause an electrical shock or electrical arcing, which could cause a fire.
- Aside from the routine maintenance described in the documentation, do not try to service the platemaker yourself. Removing the cover may expose you to shocks or other electrical hazards.
- For more information, please refer to the USER'S GUIDE.

Table of Contents

PlateMaker Set-up	5
Removing the PlateMaker	5
Installing the Imaging Unit.....	5
Standard Cassette	7
Multipurpose Feeder	8
Media Types	9
Connecting the Power Cord	9
Cable Connections.....	10
Configuring the IP Address.....	10
Windows Installation.....	11
Installing Windows Printer Driver .	11
Configuring PPD Defaults	12
Macintosh OS X	14
Web Interface	18
Service and Support.....	18

PlateMaker Set-up

Removing the PlateMaker



Removing the PlateMaker.

Note: Always use two people to lift the platemaker. There are recessed grips on the platemaker's sides.

Your package contains the following items:

- Your Xanté PlateMaker
- 500 sheet cassette
- Power cord
- Quick Reference Manual and

Utilities CD-ROM

- Imaging Unit

Note: If you do not receive your full shipment or if anything is damaged, call Xanté Customer Support at 1-800-926-8393 (US and Canada) or your Xanté dealer.

Installing the Imaging Unit



Release Top Cover Latch.



Open Top Cover and MP Feeder.



Shake Imaging Unit.

Note: Shake the unit enough to free any compacted toner. Failure to do so can cause damage to the unit.



Remove Sealing Tape.

Note: If tape is not fully removed, it may reduce print quality and cause damage.



Insert Pins into Guide Channels.



Insert Imaging Unit.



Close Top Cover.

Standard Cassette

The standard universal paper cassette holds up to 500 sheets of 20 lb bond/60 lb text weight (65 g/m²) paper

to a stack height of 2.13" (54 mm). This cassette can handle media weights from 16 - 28 lb (60 to 105 g/m²).



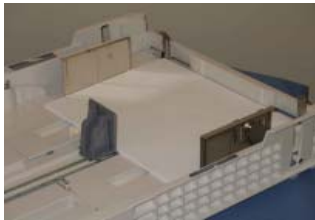
Pull Out Paper Cassette.



Remove Cassette Cover and load paper.



Adjust Width Guide.



Adjust Length Guide.



Load paper tray.

Note: To prevent paper jams, make sure the paper fits between the paper guides and under the cassette's retaining clips.

Note: Pull out the output tray extension and pull up the paper stop for paper sizes larger than letter/A4 sizes.



Adjust Output Tray Extension.

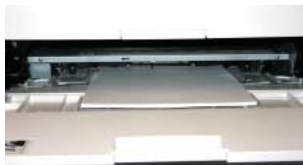
Multipurpose Feeder

The platemaker's multipurpose feeder holds up to 150 sheets of 20 lb bond/60 lb text weight (75 g/m²) paper.

The multipurpose feeder supports nonstandard size media from 3.94" x 5.83" (100 mm x 148 mm) to 13" x 26" (330 mm x 660 mm) and can handle media weights from 16 - 36 lb (60 - 135 g/m²).



Pull Out the Tray Extension.



Load Media and Adjust the Media Guides.

Media Types

Myriad 2 Polyester Plates

Connecting the Power Cord

WARNING: Always use a properly grounded, surge protected AC power outlet to prevent damage to the platemaker.

1. Make sure the platemaker's power switch is off.
2. Connect the power cable to the back of the platemaker and to the power outlet.



Power Cord for the platemaker.

WARNING: Never use a damaged power cord. Check it monthly and replace immediately if damage is found.

Cable Connections

Your PlateMaker has a 10/100BaseT Ethernet port and a Parallel Cable option.



Ethernet port



Ethernet cable

1. Turn off your platemaker.
2. Connect the desired cable to your PlateMaker and to the appropriate port on your network or computer (if you are using a crossover cable).

Configuring the IP Address

Note: If you are using the DHCP on your computer, turn off the platemaker and computer, then restart it for the new IP address to take effect.

To set the IP address, network class, and net mask, do the following:

1. Turn on the platemaker then press the MENU key until [Setup: Network] appears.
2. Press the ENTER key to enter the Network menu.
3. Set the IP address, network class, and network mask settings.
 - a. Press the MENU key until the

appropriate menu appears.

- b. Press the ENTER key to access the selected menu.
 - c. Use the RESET, MENU, NEXT, and ENTER keys to change and accept the new settings.
4. Reboot your PlateMaker and go to DOS (Command). Prompt to ping the platemaker.

For example, if your IP address is 192.9.200.204, type PING 192.9.200.204 (at the DOS prompt).
PING<IP ADDRESS>

Note: If you are using LPR printing on OSX, use the Network Utility to ping the platemaker.

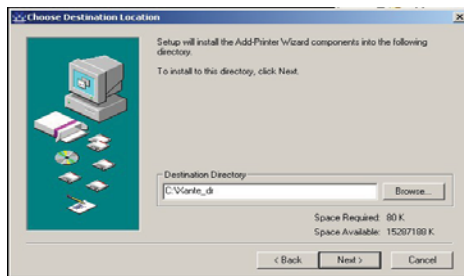
Windows Installation

Installing Windows Printer Driver

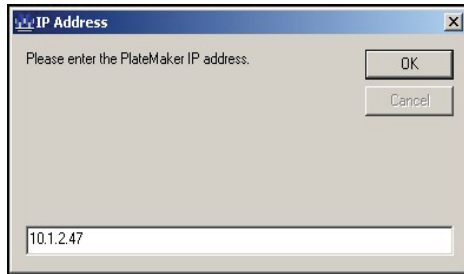
1. Insert Xante Utility CD-ROM.
2. The PlateMaker 6 Setup window appears, click the button
3. Select again and the



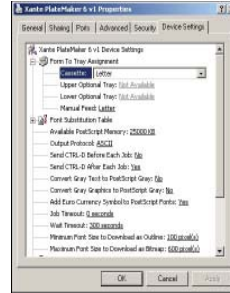
Choose Destination Location window appears. Select again.



4. The window to enter the IP Address will appear. Enter the Printer's IP Address now and select **OK**. When the Hardware Installation window appears click **Continue Anyway**



5. The properties window will open.
6. Change the Output Protocol to Binary and the Send CTRL-D After Each Job to No



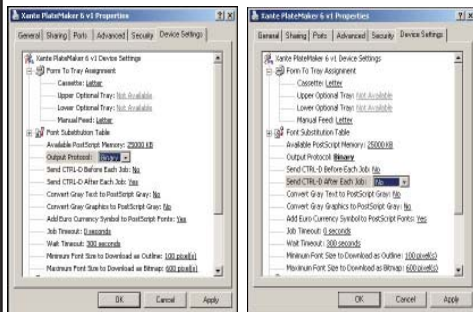
7. Select the Installable Options such as the Resolution and RAM installed.
8. Click **OK** and then click **Close**.

Configuring PPD Defaults

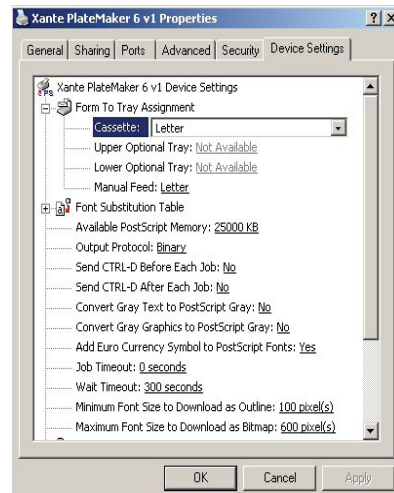
1. Select [Start] - [Settings] - [Printers and Faxes]
2. Select your PlateMaker's icon;

select [File] - [Properties]

3. Select available options; close Printers and Faxes window.



4. Select the Device Settings tab and configure the Installable Options at this time.



Click [Device Options] tab

Macintosh OS X

This section takes you through the installation process on a Macintosh OS X. You should have the latest OS X version to properly install this platemaker.



You must type in your name and password to begin, then click [OK].



Click [Continue].



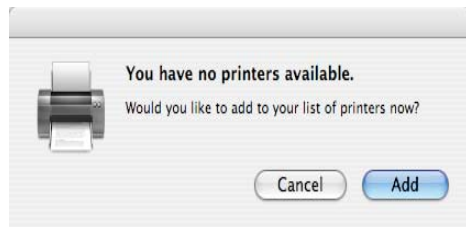
Select the location for the installation then click [Continue].



Choose [OS X only] or click [Include Classic] for the full installation. Then click [Install].



Your installation was successful. Click [Quit] to exit or [Continue] to add choices.



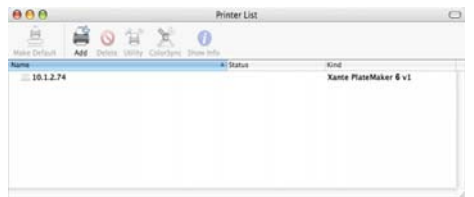
Click [Add] to add the platemaker to your list of printers.



Printer List window.

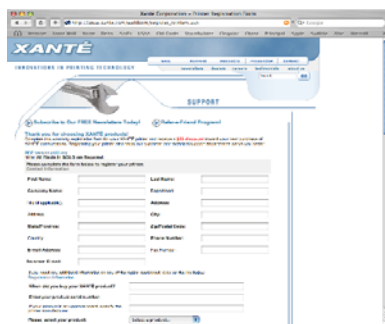


Enter the IP address for the platemaker and query the name. Select the PlateMaker 6 from the menu list and click [Add].



The PlateMaker 6 is added to your printer list.

When the Main Screen reappears, you can register your PlateMaker (if on-line).



Complete the Registration Form.

Web Interface

Once your PlateMaker has been installed onto your system, you can check its status, rename it, align paper, and much more by simply entering the IP address in the address bar of your web browser.

Note: The web browser window and all links within it are the same for both Macintosh and PC environments.

Refer to the User's Guide for more information and specifics about the features of the PlateMaker 6.

Service and Support

- Tech Support
1-800-926-8393 (US and Canada)
Other areas, call your Xanté vendor.
- Fax
(251)-473-6503
- Hours of Operation
7 a.m. - 6 p.m. Mon. - Fri. CST
- E-mail
ts1@xante.com
europesupport@xante.com

For more information about Xanté products, please visit our website:

www.xante.com