



THIS JUST IN

THE CITY OF BAXLEY

2016

ANNUAL WATER QUALITY REPORT

IS HERE! DON'T DELAY FOLKS GET YOUR COPY WHILE SUPPLIES LAST!!!

**WATER SYSTEM: (WSID) 0010000
PO BOX 290 • 282 EAST PARKER STREET • BAXLEY, GA 31515**

Spanish (Español)

Este informe contiene información muy importante sobre la calidad de su agua beber. Tradúscalo o hable con alguien que lo entienda bien.

Is my water safe?

We are pleased to present this year's 2016 Annual Water Quality Report (Consumer Confidence Report) as required by the Safe Drinking Water Act (SDWA). This report is designed to provide details about where your drinking water comes from and what it contains. This report will allow our customers to compare the water we provide to the standards set by the regulatory agencies. It also reflects the quality of the water provided during the year of 2016. We are committed to providing you with this information to keep our customers informed about the quality of the water you drink and provide to your children.

Do I need to take special precautions?

Some people may be more vulnerable to contaminants in drinking water than the general population. Immuno-compromised persons such as persons with cancer undergoing chemotherapy, persons who have undergone organ transplants, people with HIV/AIDS or other immune system disorders, some elderly, and infants can be particularly at risk from infections. These people should seek advice about drinking water from their health care providers. EPA/Centers for Disease Control (CDC) guidelines on appropriate means to lessen the risk of infection by Cryptosporidium and other microbial contaminants are available from the Safe Water Drinking Hotline (800-426-4791).

Where does my water come from?

The City of Baxley draws its water from three deep wells commonly referred to as ground water wells. Each of these wells are around seven hundred feet deep and extend into what is termed the Floridian aquifer. This is the purest aquifer available to us. That means less treatment, better quality water, and lower cost for our customers.



Source water assessment and its availability

The City of Baxley has a Well Head Protection Plan and Vulnerability Assessment which is used to satisfy the water source assessment requirements. Our Plan and Ordinance were adopted June 25, 1997. It establishes a 100 foot radius around each well and prohibits any type of activity that could potentially contaminate our water sources.



Why are there contaminants in my drinking water?

Drinking water, including bottled water, may reasonably be expected to contain at least small amounts of some contaminants. The presence of contaminants does not necessarily indicate that water poses a health risk. More information about contaminants and potential health effects can be obtained by calling the Environmental Protection Agency's (EPA) Safe Drinking Water Hotline (800-426-4791). The sources of drinking water (both tap water and bottled water) include rivers, lakes, streams, ponds, reservoirs, springs, and wells. As water travels over the surface of the land or through the ground, it dissolves naturally occurring minerals and, in some cases, radioactive material, and can pick up substances resulting from the presence of animals or from human activity: microbial contaminants, such as viruses and bacteria, that may come from sewage treatment plants, septic systems, agricultural livestock operations, and wildlife; inorganic contaminants, such as salts and metals, which can be naturally occurring or result from urban storm water runoff, industrial, or domestic wastewater discharges, oil and gas production, mining, or farming; pesticides and herbicides, which may come from a variety of sources such as agriculture, urban storm water runoff, and residential uses; organic Chemical Contaminants, including synthetic and volatile organic chemicals, which are by-products of industrial processes and petroleum production, and can also come from gas stations, urban storm water runoff, and septic systems; and radioactive contaminants, which can be naturally occurring or be the result of oil and gas production and mining activities. In order to ensure that tap water is safe to drink, EPA prescribes regulations that limit the amount of certain contaminants in water provided by public water systems. Food and Drug Administration (FDA) regulations establish limits for contaminants in bottled water which must provide the same protection for public health.

How can I get involved?



Participation and comments are always welcome. You may contact us at the Public Works Office on 148 Copeland Street or attend a City of Baxley Council meeting. The Council meets on the second and fourth Wednesday of each month at 8:30 AM in the Council Chambers at City Hall located at 282 East Parker Street.

Administration

Steve Rigdon – Mayor
Jeff Baxley – City Manager
Reba Cash – City Clerk

Council Members

Betty Livingston
Esco Hall
Pat Williams
George Skipper
Mickey Bass
Tim Varnadore

Description of Water Treatment Process

Your water is treated by disinfection. Disinfection involves the addition of chlorine or other disinfectant to kill dangerous bacteria and microorganisms that may be in the water. Disinfection is considered to be one of the major public health advances of the 20th century.



Water Conservation Tips

with Mr. Drippy

CONSERVATION TIPS

Did you know that the average U.S. household uses approximately 400 gallons of water per day or 100 gallons per person per day? Luckily, there are many low-cost and no-cost ways to conserve water. Small changes can Make a big difference – try one today and soon it will become second nature.

- Take short showers – a 5 minute shower uses 4 to 5 gallons of water compared to up to 50 gallons for a bath.
- Shut off water while brushing your teeth, washing your hair and shaving and save up to 500 gallons a month.
- Use a water-efficient showerhead. They're inexpensive, easy to install, and can save you up to 750 gallons a month.
- Run your clothes washer and dishwasher only when they are full. You can save up to 1,000 gallons a month.
- Water plants only when necessary.
- Fix leaky toilets and faucets. Faucet washers are inexpensive and take only a few minutes to replace.
- To check your toilet for a leak, place a few drops of food coloring in the tank and wait. If it seeps into the toilet bowl without flushing, you have a leak. Fixing it or replacing it with a new, more efficient model can save up to 1,000 gallons a month.
- Adjust sprinklers so only your lawn is watered. Apply water only as fast as the soil can absorb it and during the cooler parts of the day to reduce evaporation.
- Teach your kids about water conservation to ensure a future generation that uses water wisely. Make it a family effort to reduce next month's water bill!
- Visit www.epa.gov/watersense for more information.

Play your part, be water smart!

Wise Water Use

Water your yard and outdoor plants early or late in the day to reduce evaporation.

Take shorter showers - five minutes or less is best.

Put faucet aerators on sink faucets.

Install new toilets that use less than 1.6 gallons per flush.

Use plants that require less water.

Get an Energy Star labeled washing machine. Wash only full loads.

Turn off the water while soaping hands and brushing teeth.

Turn off sink faucet while scrubbing dishes and pots.

Use low flow showerhead.

Use a shut-off nozzle on your hose.

Mulch around plants to hold water in the soil.

Use a broom, not a hose, to clean driveways and walkways.

Save it, or do without it!

Results of radon monitoring

Radon is a radioactive gas that you can't see, taste or smell. It is found throughout the U.S... Radon can move up through the ground and into a home through cracks and holes in the foundation. Radon can build up to high levels in all types of homes. Radon can also get into indoor air when released from tap water from showering, washing dishes, and other household activities. Compared to radon entering the home through soil, radon entering the home through tap water will in most cases be a small source of radon in indoor air. Radon is a known human carcinogen. Breathing air containing radon can lead to lung cancer. Drinking water containing radon may also cause increased risk of stomach cancer. If you are concerned about radon in your home, test the air in your home. Testing is inexpensive and easy. Fix your home if the level of radon in your air is 4 picocuries per liter of air (pCi/L) or higher. There are simple ways to fix a radon problem that aren't too costly. For additional information, call your state radon program or call EPA's Radon Hotline (800-SOS-RADON).

Cross Connection Control Survey

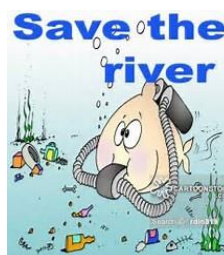
The purpose of this survey is to determine whether a cross-connection may exist at your home or business. A cross connection is an unprotected or improper connection to a public water distribution system that may cause contamination or pollution to enter the system. We are responsible for enforcing cross-connection control regulations and insuring that no contaminants can, under any flow conditions, enter the distribution system. If you have any of the devices listed below please contact us so that we can discuss the issue, and if needed, survey your connection and assist you in isolating it if that is necessary.

- Boiler/ Radiant heater (water heaters not included)
- Underground lawn sprinkler system
- Pool or hot tub (whirlpool tubs not included)
- Additional source(s) of water on the property
- Decorative pond
- Watering trough

Source Water Protection Tips

Protection of drinking water is everyone's responsibility. You can help protect your community's drinking water source in several ways:

- Eliminate excess use of lawn and garden fertilizers and pesticides – they contain hazardous chemicals that can reach your drinking water source.
- Pick up after your pets.
- If you have your own septic system, properly maintain your system to reduce leaching to water sources or consider connecting to a public water system.
- Dispose of chemicals properly; take used motor oil to a recycling center.
- Volunteer in your community. Find a watershed or wellhead protection organization in your community and volunteer to help. If there are no active groups, consider starting one. Use EPA's Adopt Your Watershed to locate groups in your community, or visit the Watershed Information Network's How to Start a Watershed Team.
- Organize a storm drain stenciling project with your local government or water supplier. Stencil a message next to the street drain reminding people "Dump No Waste - Drains to River" or "Protect Your Water." Produce and distribute a flyer for households to remind residents that storm drains dump directly into your local water body.



Additional Information for Lead

If present, elevated levels of lead can cause serious health problems, especially for pregnant women and young children. Lead in drinking water is primarily from materials and components associated with service lines and home plumbing. City of Baxley (WSID) #0010000 is responsible for providing high quality drinking water, but cannot control the variety of materials used in plumbing components. When your water has been sitting for several hours, you can minimize the potential for lead exposure by flushing your tap for 30 seconds to 2 minutes before using water for drinking or cooking. If you are concerned about lead in your water, you may wish to have your water tested. Information on lead in drinking water, testing methods, and steps you can take to minimize exposure is available from the Safe Drinking Water Hotline (800-426-4791) or at <http://www.epa.gov/safewater/lead>.

Water Quality Data Table

In order to ensure that tap water is safe to drink, EPA prescribes regulations which limit the amount of contaminants in water provided by public water systems. The table below lists all of the drinking water contaminants that we detected during the calendar year of this report. Although many more contaminants were tested, only those substances listed below were found in your water. All sources of drinking water contain some naturally occurring contaminants. At low levels, these substances are generally not harmful in our drinking water. Removing all contaminants would be extremely expensive, and in most cases, would not provide increased protection of public health. A few naturally occurring minerals may actually improve the taste of drinking water and have nutritional value at low levels. Unless otherwise noted, the data presented in this table is from testing done in the calendar year of the report. The EPA or the State requires us to monitor for certain contaminants less than once per year because the concentrations of these contaminants do not vary significantly from year to year, or the system is not considered vulnerable to this type of contamination. As such, some of our data, though representative, may be more than one year old. In this table you will find terms and abbreviations that might not be familiar to you. To help you better understand these terms, we have provided the definitions below the table.

	MCLG	MCL,						
	or	TT, or	Your	Range		Sample		
Contaminants	MRDL	MRDL	Water	Low	High	Date	Violation	Typical Source
Disinfectants & Disinfectant By-Products								
(There is convincing evidence that addition of a disinfectant is necessary for control of microbial contaminants)								
Chlorine (as Cl ₂) (ppm)	4	4	1.7	1.2	1.7	2016	No	Water additive used to control microbes
Haloacetic Acids (HAA5)(ppb)	NA	60	8.27	8.27	8.27	2016	No	By-product of drinking water chlorination
TTHMs [Total Trihalomethanes] (ppb)	NA	80	24	24	24	2016	No	By-product of drinking water disinfection
Inorganic Contaminants								
Barium (ppm)	2	2	0.068	.055	.06	2014	No	Discharge of drilling wastes; Discharge from metal refineries; Erosion of natural deposits
Fluoride (ppm)	4	4	.93	.71	.93	2016	No	Erosion of natural deposits; Water additive which promotes strong teeth; Discharge from fertilizer and aluminum factories
Nitrate [measured as Nitrogen](ppm)	10	10	0	NA	0	2016	No	Runoff from fertilizer use; Leaching from septic tanks, sewage; Erosion of natural deposits
Sodium (optional)(ppm)	NA		16	15	16	2014	No	Erosion of natural deposits; Leaching

Radioactive Contaminants								
Radium (combined 226/228) (pCi/L)	0	5	1.38	1.38	1.38	2016	No	Erosion of natural deposits
			Your	Sample	# Samples		Exceeds	
Contaminants	MCLG	AL	Water	Date	Exceeding		AL	Typical Source
Inorganic Contaminants								
Copper - action level at consumer taps (ppm)	1.3	1.3	.16	2014	20		No	Corrosion of household plumbing systems; Erosion of natural deposits
Lead - action level at consumer taps (ppb)	0	15	0	2014	0		No	Corrosion of household plumbing systems; Erosion of natural deposits

Unit Descriptions	
Term	Definition
Ppm	ppm: parts per million, or milligrams per liter (mg/L)
Ppb	ppb: parts per billion, or micrograms per liter (µg/L)
pCi/L	pCi/L: picocuries per liter (a measure of radioactivity)
NA	NA: not applicable
ND	ND: Not detected
NR	NR: Monitoring not required, but recommended.
Important Drinking Water Definitions	
Term	Definition
MCLG	MCLG: Maximum Contaminant Level Goal: The level of a contaminant in drinking water below which there is no known or expected risk to health. MCLGs allow for a margin of safety.
MCL	MCL: Maximum Contaminant Level: The highest level of a contaminant that is allowed in drinking water. MCLs are set as close to the MCLGs as feasible using the best available treatment technology.
TT	TT: Treatment Technique: A required process intended to reduce the level of a contaminant in drinking water.
AL	AL: Action Level: The concentration of a contaminant which, if exceeded, triggers treatment or other requirements which a water system must follow.
Variations and Exemptions	Variations and Exemptions: State or EPA permission not to meet an MCL or a treatment technique under certain conditions.
MRDLG	MRDLG: Maximum residual disinfection level goal. The level of a drinking water disinfectant below which there is no known or expected risk to health. MRDLGs do not reflect the benefits of the use of disinfectants to control microbial contaminants.
MRDL	MRDL: Maximum residual disinfectant level. The highest level of a disinfectant allowed in drinking water. There is convincing evidence that addition of a disinfectant is necessary for control of microbial contaminants.
MNR	MNR: Monitored Not Regulated
MPL	MPL: State Assigned Maximum Permissible Level

For more information please contact:

Contact Name: Dale Sapp
Address: P.O. Box 290
Baxley, Ga. 31515
Phone: 912-367-8314
Fax: 912-367-8324
E-Mail: dsapp@atc.cc
Website: baxley.org

THE CITY OF BAXLEY WOULD LIKE TO SAY



Thanks!

FOR BEING SUCH VALUED CUSTOMERS!

"This institution is an equal opportunity provider and employer."

If you wish to file a Civil Rights program complaint of discrimination, complete the USA Program Discrimination Complaint Form, found online at http://www.ascr.usda.gov//complaint_filing_cust.html or at any USDA office, or call (866)632-9992 to request the form. You may also write a letter containing all of the information requested in the form. Send your completed complaint form or letter to U.S. Department of Agriculture, Director, Office of Adjudication, 1400 Independence Avenue, S.W., Washington, D.C. 20250-9410, or by fax (202) 690-7442
Or email to program.intake@usda.gov.